

artitja e-news

your gateway to contemporary indigenous fine art

ARTITJA FINE ART NEWSLETTER VOL 18 FEBRUARY 2009

THIS EDITION:

- **Welcome**
- **The Year Ahead**
- **New Works**
- **Forthcoming exhibition: Mwarre Anthurre - Good One! March 7-22**
- **Website**

Welcome to Artitja Fine Art's first newsletter for 2009, updating you with what's new and what we are up to.

The Year Ahead..

As a home-based gallery we have been, and continue to be, available for appointment throughout the summer, and right now are busy preparing for our next exhibition *Mwarre Anthurre - Good One!* (Details of which can be found a little later in this newsletter.)

More exhibitions are planned for 2009 as well as our now regular 'home shows' and our interstate art visits.

The beauty of our home-based model is flexibility in time and dates and you will be informed of these events as they arise.

New Works

I (Anna) have just returned from Alice Springs where I spent several days choosing works including those for our show. I guess somebody has to do it!

Heading out to the claypans.. still getting some rain in the Alice



Even though it was very hot, the abundant rains that central Australia has experienced over the summer (and still is - see my photo) has turned the country into a mass of colour. It was a stunning sight coming in to land as the McDonald Ranges radiated green, purple and red against the bright blue sky, and notice the clay pans still holding quite a lot of water. Magnificent.

For a city girl, the down side was the abundance of: snakes, spiders, grasshoppers, mosquitos and flies. And my keys being invaded by such wildlife as seen in this photo!



Every minute was as enjoyable as always on my visits to the Centre and following below are just some of the beautiful works that I have returned with, that won't be in our exhibition (which will feature works only from Utopia and Mt Liebig), but are available now. To Enquire: info@artitja.com.au.



Thomas Tjapaltjarri, 120x30cm x 2 panels available individually



L: Emily Pwerle 120x90cm
Below: Janie Ward 30x30cm



When Arthur and I first laid eyes on Kukula McDonalds Black Cockatoo paintings we simply fell in love. For those of you who have visited our home gallery and seen our painting of hers and liked it (yes, incredibly some of you don't) – we are happy to say we now have a few of Kukula's paintings available. Below is a small 30x30cm single Black Cockatoo and a larger painting sized 61x61cm.

For enquiries please email on info@artitja.com.au or phone 08 9336 7787.



Kukula McDonald is 23 years old, from Papunya and paints through the Bindi Workshops in Alice Springs – where people with Disabilities in Alice Springs are encouraged to paint.

The stunning Jeannie Petyarre painting opposite at 200cm x 60cm needs a large wall either to hang portrait or horizontally. The detail is magnificent in this painting which although depicting Bush Medicine, gives the feeling of water over sea grasses with its subtle movement.

Jeannie Petyarre is a cousin of Gloria Petyarre's and having been given permission by Gloria to paint her Bush Medicine design, has developed it over the years to a highly regarded design. Very affordable too!



I have also returned with a lovely range of small pieces by Jeannie Petyarre measuring approx 30x30cm.



Paintings by Walangkura Napanangka, 120x60cm each. To enquire: info@artitja.com.au



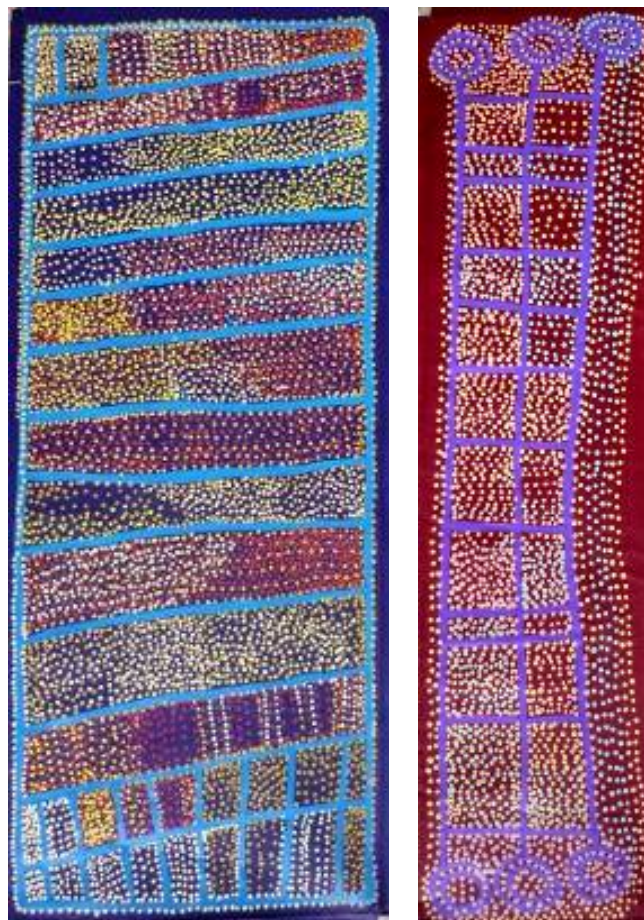
Two 2009 stunning paintings by **Judy Watson Napangardi** below – top size 91x91cm, painting below 107x61cm. To enquire info@artitja.com.au



Judy Watson Napangardi (above) 91x91 (below) 107x61cm



Also recently painted by Shorty Jangala Robertson these stunning bold works.



Shorty Jangala Robertson L: 152x61cm R 122x30cm

All the paintings featured in this newsletter are for sale and price and information enquiries are welcome on 08 9336 7787 (m) 0418 900 954 or by email info@artitja.com.au .

We would love to receive your call.

Forthcoming exhibition: MWARRE ANTHURRE – Good One! 7-22 March 2008

We are well and truly into planning and preparation mode for our next exhibition opening on Saturday 7th March, in South Fremantle.

We are excited to again be exhibiting at Earlywork, 300 South Terrace, South Fremantle and would love to see you at the Saturday afternoon opening.

The exhibition will feature art from Utopia and the Watiyanu Artists from Mt Liebig and features some exciting new young artists, as well as the well known and established ones.

Works have especially been chosen for their quality, freshness and affordability so there should be something for everyone.

Your invitation will be sent to you shortly. In the meantime, put it in your 2009 diary!

We hope you have enjoyed reading this newsletter which is less of news and more of images.

While writing this newsletter I've been listening to the radio about the tragedy of the bushfires on our east coast and my heart can feel the grief of the communities who have lost everything, many including their lives.

The art shown here lifts the spirit and I think for all of us who are lovers and collectors of fine art, much of the attraction is that it feeds the soul.

Indigenous art through the artists always represent country and is a constant reminder of the power of nature and the respect it deserves.

Website

Keep updated with what's happening and new works by checking out our website at www.artitja.com.au .

We hope you enjoyed reading our latest newsletter. For any enquiries, feedback or to make an appointment to view, please feel free to call or email on the numbers in the header below.

**Anna Kanaris &
Arthur Clarke**

