



## THE SUMMER SHOW Art + Objects

Artitja Fine Art is delighted to be opening throughout January at Earlywork showcasing a fine range of paintings and licensed merchandise which ensure the continuance of the artists practice through royalty payments.

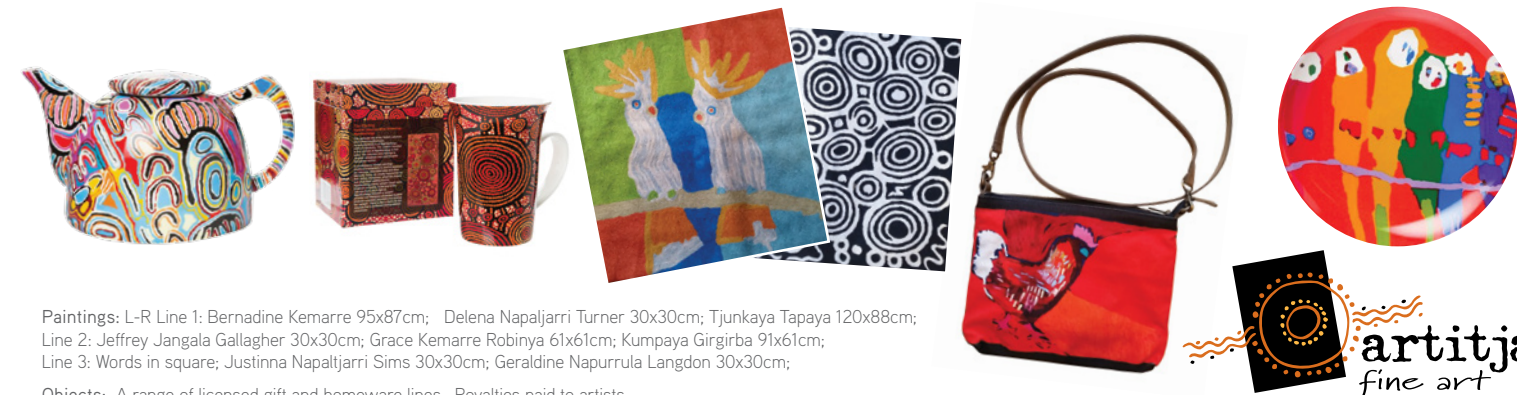
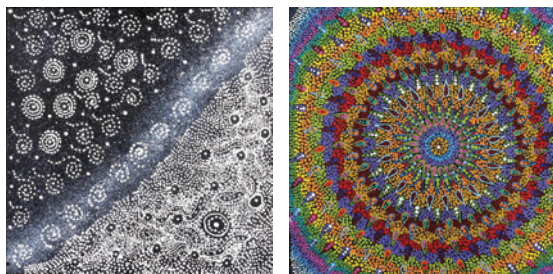
This is the ninth year of our popular exhibition, in which we aim to present the opportunity to learn, appreciate and purchase Aboriginal fine art in a friendly, accessible environment.

**Please join us for an informal opening on  
Saturday 6th January 2018 between 2-4pm**

At Earlywork  
330 South Terrace, South Fremantle  
Light refreshments will be served

**Exhibition Continues:**  
6th to 28th January, 11am – 4pm Wed – Sun  
*(or by appointment outside those times)*

Paintings, metal sculptures, cushion covers, hand creams, soaps, scarves, table runners and kitchenware, purses, children's books...



Paintings: L-R Line 1: Bernadine Kemarre 95x87cm; Delena Napaljarri Turner 30x30cm; Tjunkaya Tapaya 120x88cm; Line 2: Jeffrey Jangala Gallagher 30x30cm; Grace Kemarre Robinya 61x61cm; Kumpaya Girgirba 91x61cm; Line 3: Words in square; Justinna Napaltjarri Sims 30x30cm; Geraldine Napurrula Langdon 30x30cm;

Objects: A range of licensed gift and homeware lines. Royalties paid to artists.

**Enquiries:** Anna Kanaris **T:** 08 9336 7787 **M:** 0418 900 954 **E:** info@artitja.com.au **W:** www.artitja.com.au  
Winner of Fremantle Business Awards: • Outstanding Cultural Enterprise (2017) • Corporate Social Responsibility (2016)

