

Collaborative painting by Sandra Goodwin, Raylene Walatinna, Jeannie Reggie, Julie Yatjitja 198x137cm



presents

## KNOWING COUNTRY

*The Power of Aboriginal Women in Art*

8<sup>th</sup> -25<sup>th</sup> March 2018

Earlywork, 330 South Terrace  
South Fremantle



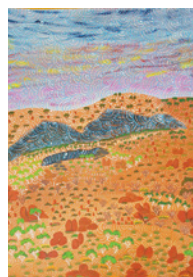
Opening on International Women's Day, this exhibition honours Aboriginal women artists from regional and remote art communities around Australia.

Please join us at the exhibition opening  
**Thursday 8th March, 6.30pm - 8.30pm.**

To be opened by Judith Hugo, Art Curator, North Metropolitan TAFE.

**RSVP to Opening:** [info@artitja.com.au](mailto:info@artitja.com.au) by Tuesday 6th March.

**Venue:** Earlywork, 330 South Terrace, South Fremantle (Blue CAT bus, STOP 9)

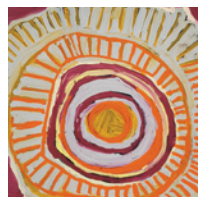
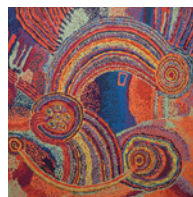


**Information/Panel session: Saturday 10th March, 2.00pm -3.00pm**

Guest Speakers: Carly Lane – Curator of Aboriginal and Torres Strait Islander Art, Art Gallery of WA; Judith Hugo – Art Curator, North Metropolitan TAFE; and Hon. Simone McGurk MLA, State Member for Fremantle – Minister for Women's Interests.

**Bookings Essential:** (limited seating) [artitjatalk.eventbrite.com.au](http://artitjatalk.eventbrite.com.au)

**Exhibition Ends: 25th March** Runs 11am - 5pm, Wed-Sun



Enquiries: Anna Kanaris | Tel 08 9336 7787 | Mob 0418 900 954

Email [info@artitja.com.au](mailto:info@artitja.com.au) | Web [www.artitja.com.au](http://www.artitja.com.au)

View exhibition online [www.artitja.com.au](http://www.artitja.com.au)

*Left hand group - Top clockwise:* Vicki Cullinan 152x122cm; Lee Nangala Gallagher 122x91cm; Murdie Morris 46x46cm; Alison Lionel 75x75cm; Priscilla Pitjarra Foster 76x61cm