

## THIS EDITION:

- **MOTHER AND DAUGHTER: Lulu and Selina Teece opens 5<sup>th</sup> March**
- **NEW WORKS IN**
- **JANINE McAULLAY BOTT SOLO EXHIBITION PLANNED FOR MELBOURNE**
- **SAD PASSING**
- **WEBSITE UPDATES**
- **EARLYWORK OUR EXHIBITING SPACE**
- **APPOINTMENT TO VIEW**

**Welcome** to our first newsletter for 2010, and we wish you all a wonderful year. Arthur and I feel energised about the art year ahead which already is showing signs of improving health after a challenging 2009. The good news is we are still here to talk about it.

## **MOTHER AND DAUGHTER: Lulu and Selina Teece - opens 5<sup>th</sup> March 6.30pm - meet the artists**

**Diarise now 6.30 pm 5<sup>th</sup> March** This exhibition is one we are very excited about, as we are sure would be many of you who have admired - and acquired - Selina Teece's work since we first began showing her work in 2007.

Selina is the daughter of highly regarded artist Lulu Teece Apetyarr from the remote community of Ampilatwatja (pronounced Um-blud-a-witch) north of Utopia in the eastern central desert. Selina's style and technique is an exceptional example of the new wave of desert artists who have grown up immersed in their elders' art pursuits and are interpreting ancestral dreamings in a fresh and vibrant contemporary way.

Her mother Lulu born in 1953 was one of the 88 Utopia artists who contributed to the silk batik project documented in *Utopia: A Picture Story* in 1988 and since then has developed an international reputation as a fine artist.

Lulu and Selina contrasting styles will be evident in this exhibition.. While Lulu's landscapes are a mixture of naïve realism and fine dotting, Selina through the clever

use of background dotting creates a 3D effect - many of you have seen iconography in her Spinifex Story paintings such as lips, kisses and lemon slices. While these paintings depict the spinifex bush in her country, her bush tomato series are much more akin to the fine dot work characteristic of the Utopian artists. Here's a preview:



Selina Teece Pwerl Spinifex Story



(l) Selina (r) Lulu

Lulu Teece Apetyarr Landscape (below)  
Selina Teece Pwerl Bush Tomato (r)



The exhibition will be an opportunity to see some of Selina's new designs for the first time and to meet the artists - **we are delighted to have both Selina and Lulu flying over for opening night** and present at times during the opening weekend. Lulu's attendance is courtesy of her art centre at Ampilatwatja.

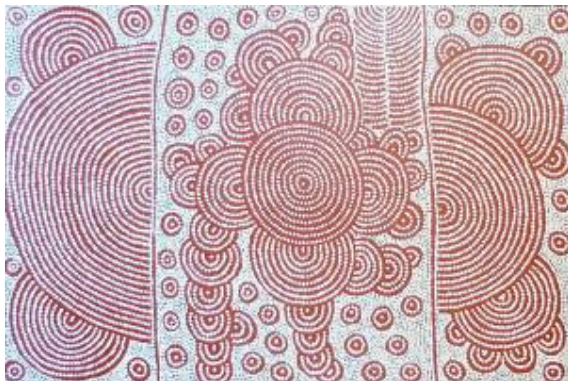
Your invitation will be arriving soon, but in the meantime, please jot the date and time in your calendar **6.30pm Friday March 5<sup>th</sup>** - this will be a special show.

## NEW WORKS IN

We are very pleased to have these striking new works by artist Debra Nangala McDonald. Debra is the granddaughter of famed Papunya painter Shorty Lungkata Tjungarrayi. Debra's stories have been passed down through her grandad and we're sure you agree she is a great painter.



Debra Nangala McDonald 'Goanna Story' 120x90cm POA:  
[info@artitja.com.au](mailto:info@artitja.com.au)



Debra Nangala McDonald 'Goanna Love Story' 90x60cm POA:  
[info@artitja.com.au](mailto:info@artitja.com.au)



Debra Nangala McDonald 'Two Women Dreaming' 90x60cm POA:  
[info@artitja.com.au](mailto:info@artitja.com.au)

We have a few more of Debra's paintings not shown here. Her work is very precise and traditional in style which is quite unusual for a female artist, particularly a younger artist like Debra who was born in 1969.

If you are interested in these paintings and would like further information please either call or email us.

## JANINE MCAULLAY BOTT SOLO EXHIBITION IN MELBOURNE OPENING IN APRIL

For the first time since 2006, Janine McAullay Bott's fibre sculptures will not be part of our forthcoming exhibition - for a very good reason.

Opening on the 21st April, Artitja Fine Art will be co-hosting Janine's first solo exhibition at the Alison Kelly Gallery in Melbourne. Janine has been working towards this exhibition for some time and her stunning bush sculptures will be heading east shortly.

You will receive your invitation to the exhibition closer to the time, and we look forward to seeing our Melbourne clients at the exhibition.

Janine and Artitja Fine Art are also delighted that one of her pieces acquired by Janet Holmes a Court for her personal collection at our 2006 Desert Dreaming show when we first exhibited Janine is on show at the Holmes a Court Gallery current exhibition TEN, which celebrates ten years of the gallery's existence.

Janine as you know is the recipient of the 2009 Telstra NATSIA Wandjuk Marika Memorial Award: 3D category.

The exhibition will also coincide with our next art visit to Melbourne and we will be notifying you of the dates a little closer to the time.

## SAD PASSING

2009 was quite a sad year for many artists in Utopia with the passing of more than a few elders/artists from Utopia whose loss will be felt far and wide.

A sadder instance however was with the death of young, mother of five, Janelle Stockman Napaltjarri, who was killed late last year in a single vehicle rollover on a bitumen road on the way to Hermansburg.

You may remember in 2004 we featured Janelle as an emerging artist as part of the Bush Yam exhibition that we held at Kidogo Gallery in Fremantle. Some of the work in that show we are still convinced was amongst her best and although Janelle had continued painting since, her commitment as a young Mum of a growing family meant that her artistic development and profile had been a little slow.

Janelle had great talent and very much wanted to become a well known artist, and more than a few times I encouraged her to keep her vision.

We were looking forward to following her career progress and had in mind a future exhibition.

That's not going to happen now, and all we are left with is a very sad situation in which five children have lost their mother and a great artistic talent is lost.



Janelle Stockman Napaltjarri, sadly missed.

## WEBSITE UPDATES [www.artitja.com.au](http://www.artitja.com.au)

We make updates regularly to our website and new changes will be going up shortly which will include new works from Ernabella and Fregon images of which we circulated recently.

## EARLYWORK OUR EXHIBITING SPACE ONCE MORE FOR 2010

We are delighted with our ongoing arrangement at the Earlywork gallery space in South Fremantle, which will once again be our exhibiting space for 2010. This year we have four exhibitions planned which all promise to be quite different and exciting, and which will include works of newer artists.

## MAKE AN APPOINTMENT TO VIEW...

HOWEVER! Although we are now holding four exhibitions a year that doesn't mean we are not around between times.

We are open seven days, by appointment and have many more works than what go on show and what you see here. Contact us on 9336 7787, 0418 900 954 or email [info@artitja.com.au](mailto:info@artitja.com.au).

We are always very busy working hard at keeping up our profile, our reputation and supply of top quality Indigenous art which we take great pleasure in showing you.

That's all for now, and we look forward to seeing you at our MOTHER AND DAUGHTER exhibition in March.

Wishing you happiness, good health, longevity and good luck in 2010, the Chinese year of the Tiger.



*Anna Kanaris and  
Arthur Clarke*

© All text and images in this newsletter are copyright and the property of Artitja Fine Art and cannot be reproduced in part or whole without written permission.