

## THIS EDITION:

- **Welcome**
- **DESERT COLOURS – opens 16<sup>th</sup> July**
- **YINYAR – Janine McAullay Bott exhibited in Melbourne**
- **Website updates**
- **Appointment to View**

*Welcome to our July newsletter* – a few months late but we're happy to say at a time that the art world is being challenged in more ways than one - as are many industry sectors, we are happy to still be here and being kept busy sourcing and selling art and preparing for our next exhibition *Desert Colours* to which you will shortly receive your invitation.

### DESERT COLOURS – 16 July – 1 August

It's always nice to be inspired by colour in mid winter when outside it is cold, wet (perhaps not this year in Perth at least!) and that's exactly the theme of our forthcoming exhibition which will feature vibrant and colourful works from select desert art communities. DESERT COLOURS will feature the best from Utopia, Yuendumu, a new collective of artists from South Australia and the Roebourne Art Group. Bursts of colour and warmth emanate from these paintings, and we are excited for the first time to be featuring carved ceremonial men sculptures by Utopia carver Wally Pwerle. I was delighted to source 5 fabulous carvings and bird sculptures for this show. Pictured here are two of Wally's sculptures size 112cm and 130cm.



The exhibition will be held at Earlywork – our regular exhibiting space in South Terrace, South Fremantle. I (Anna) sourced most of the works for the show in my latest bush trip in May – a wonderful time to be in the Alice. Due to widespread rain and flooding on two occasions this year the red centre is currently known as 'the green centre' because of its lushness after those rains. Here are some photographs of the results of the rain.



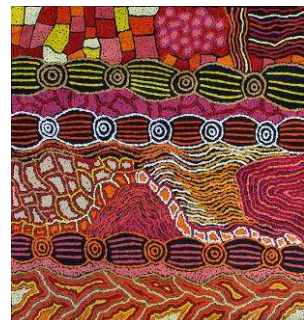
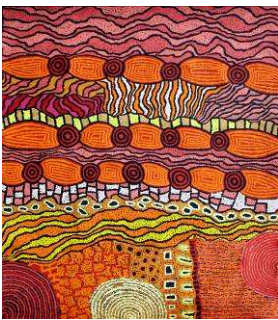
*In ten years to Utopia this is the first time I have seen this 'field' full of water. The wildlife was plentiful. (Photo ©: Anna Kanaris)*



*Those McDonnell Ranges grab your heart each time (Photo: Anna Kanaris) (below) the rain just kept coming back*



Here is a small preview of works from DESERT COLOURS:



Top: Jill Churnside, Selina Teece Pwerl  
Centre: Damien and Nyinkalya Marks (both)  
Bottom: Imiyari (Yilpi) Adamson

## JANINE MCAULLAY BOTT – YINYAR – exhibited in Melbourne

Winner of the NATSIAA 2009 Wandjuk Marika 3D Memorial Award Janine McAullay Bott has continued in 2010 achieving heights in her career.

In April, Artitja Fine Art in association with Alison Kelly Gallery in Melbourne presented Janine's first solo exhibition which was received with great enthusiasm. Janine's sculptures were acquired by the National Gallery of Victoria and Artbank as well as numerous private collectors, adding to an already impressive list. Janine was present at the exhibition in the Prarhan gallery at which she demonstrated and discussed her work. See photo's below.



We are delighted that Janine is once again a finalist in the 2010 NATSIAA Awards.

For enquiries about Janine's work please contact us at Artitja Fine Art. More images can be seen on our website.

### WEBSITE UPDATES

Keep a lookout for website updates [www.artitja.com.au](http://www.artitja.com.au). We have recently placed some new images there, and plan to have the exhibition on line prior to the opening.

## APPOINTMENT TO VIEW...

A short newsletter this issue. We look forward to seeing you at DESERT COLOURS and are happy to take appointments for preview at any time.

Keep in mind we hold an extensive collection of works both new and older. We also have a small but exclusive selection of prints which are limited edition and a very good alternative.

We are also happy to send you images and information associated with your enquiry.

We are open seven days, by appointment. Contact us on 9336 7787, 0418 900 954 or email [info@artitja.com.au](mailto:info@artitja.com.au).

We are always very busy working hard at keeping up our profile, our reputation and supply of top quality Indigenous art which we take great pleasure in showing you.



***Anna Kanaris and Arthur Clarke***

---

© All text and images in this newsletter are copyright and the property of Artitja Fine Art and cannot be reproduced in part or whole without written permission.