

artitja fine art presents

mother and daughter

Lulu Teece Apetyarr

and

Selina Teece Pwerl



Please JOIN US at the OPENING of **mother**
and
daughter
a unique exhibition featuring Lulu Teece Apetyarr and Selina Teece Pwerl

6.30pm Friday 5th March 2010

@ Earlywork, 330 South Terrace, South Fremantle

meet the artist : Lulu Teece Apetyarr and Selina Teece Pwerl will be present.

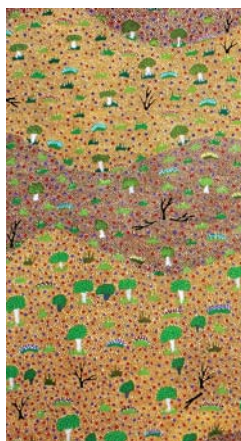


Lulu Teece *Petyarre* (Apetyarr) was born c.1953 and began painting in the late 1980's. She was one of the 88 Utopia artists who contributed to the silk batik project documented in *Utopia: A Picture Story* in 1988 and has since become a widely exhibited and acclaimed artist.

Lulu is Selina Teece's mother and paints through the art centre at Ampilatwatja.

Selina Teece *Pwerl's* (Pula) traditional country *Antarremgeny* lies in *Alyawarr* country north of Utopia at *Ampilatwatja* in the eastern central desert.

Selina's style and technique is an exceptional example of the new wave of desert artists who have grown up immersed in their elders' art pursuits and are interpreting ancestral dreamings in a fresh and vibrant contemporary way.



Enquiries and RSVP:

Anna Kanaris p 08 9336 7787 m 0418 900 954

e info@artitja.com.au w www.artitja.com.au

Exhibition Dates: 5-21 March 2010, 10am – 6pm daily @ Earlywork, 330 South Terrace, South Fremantle

